

# COUNTY WICKLOW LOCAL ECONOMIC AND COMMUNITY PLAN

Consultation Workshop –  
Social Innovation, Entrepreneurship & Local Development

25<sup>th</sup> August 2015

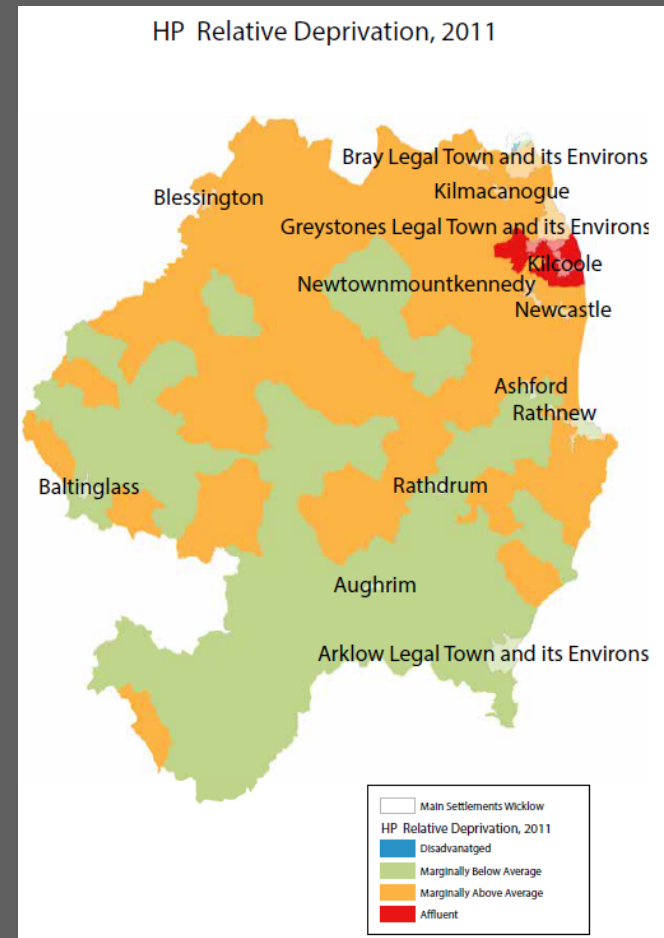


# WHERE WE ARE IN THE LECP PROCESS

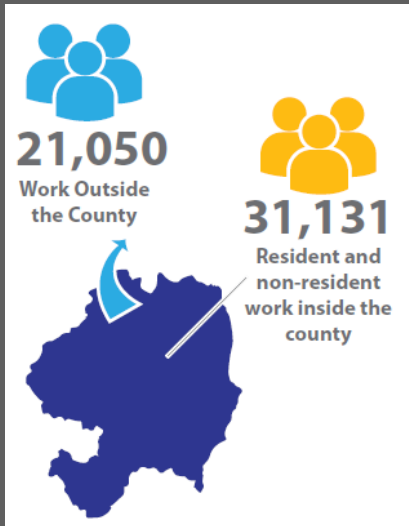
- Socio-Economic Profile **prepared**
- Socio-Economic Statement **published**
- Vision and High Level Goals **agreed**
- Current Stage
  - Preparation of **Community Plan** and Preparation of **Economic Plan**

# KEY BASELINE FINDINGS

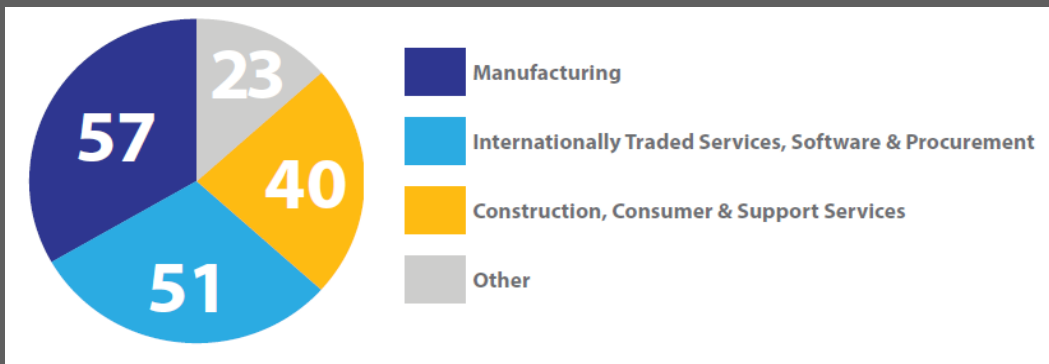
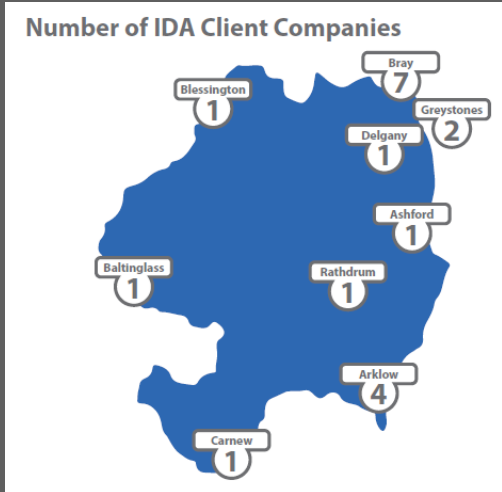
- ✓ Population Census 2011 - 136,640 → +8.3%
- ✓ 47,798 households – 20% - one person
- ✓ 27% of people live in rural areas
- ✓ Age dependency 51.0%
- ✓ Older population - 11%
- ✓ Persons with a Disability – 13%
- ✓ 9.9% non-Irish national
- ✓ 721 Irish Travellers in County - highest number living in Bray & Wicklow & Rathnew
- ✓ High Traveller unemployment & a high Traveller youth population



# KEY BASELINE FINDINGS



- Live Register (July 2015) – 10,919 → 13% under 25 years of age
- Employment – 31,131 resident and non-resident work in County
- 21,050 out-commute for employment
- High level of out-commuting to DLR & Dublin City Centre



Industry Sector	No. of IDA Client Companies in Wicklow
Engineering	5
BioPharma & Medical Devices	7
Internet & Computer Technology	6
Financial Services	1
<b>Total</b>	<b>19</b>

# VISION FOR THE COUNTY

→ LECP is informed by an overarching **Vision** for County Wicklow:

“Our Vision is for a county which provides a high quality of life and well-being for all; values socially inclusive urban and rural communities; is driven by a dynamic and innovative economy; promotes and prioritises sustainable development and protects and enhances the county’s unique and rich natural and cultural heritage”.

# HIGH-LEVEL GOALS:

## COMMUNITY DEVELOPMENT AND SOCIAL INCLUSION

### COMMUNITY DEVELOPMENT & SOCIAL INCLUSION

GOAL 1: Develop community capacity in disadvantaged communities and engage in urban regeneration and rural development.

GOAL 2: Promote active citizenship and public participation to improve governance, transparency and enrich decision making.

GOAL 3: Develop targeted and integrated supports for vulnerable and disadvantaged groups (see Appendix 3)

GOAL 4: Support local communities in innovation, entrepreneurship, micro-enterprise and social innovation.

GOAL 5: Capitalise on Wicklow's unique attributes incl. proximity to Dublin market: excellent quality of life; human capital; tourism; landscape, marine, agriculture and forestry resources

# HIGH-LEVEL GOALS:

## ECONOMIC AND ENTERPRISE DEVELOPMENT

### ECONOMIC & ENTERPRISE DEVELOPMENT

**GOAL 6:** Develop infrastructure and measures that are positive and supportive to investment, enterprise, innovation and knowledge creation, in strategic locations.

**GOAL 7:** Sustain existing enterprise and develop quality employment and income opportunities for the wide range of employment needs in the county with possibilities for reversing commuting patterns.

**GOAL 8:** Support training and labour activation measures based on analysis of employment trends and the skill needs of employers.

**GOAL 9:** Support a shift towards low carbon & climate resilient economic activity, reducing energy dependence and sustainable use of resources, and leading in the Smart Green economy.

**GOAL 10:** Harness efficiently the full resources of the County and reduce duplication and unnecessary overlap.

# OBJECTIVES

- The High-Level Goals will be developed into a series of **OBJECTIVES** and will become targeted **MEASURABLE** actions
- These objectives relate to
  - **Economic** development
  - **Community** development
  - **Both** economic and community development



# CURRENT STAGE

- Preparation of **Community Plan** and Preparation of **Economic Plan**
- Identification of **Strategic Priorities**
- **Measurable Actions**

# ENTERPRISE AND INNOVATION

- Identified as a key **High Level Goal** for the County
- Covers a wide range of issues, such as:
  - Promote knowledge concept of social enterprise amongst public & business community
  - Promote social inclusion through social enterprise
  - Develop infrastructure and support services
  - Develop and support investment, enterprise, innovation and knowledge enterprise
  - Create new employment and enterprise opportunities
  - Support training and labour skills and activation
  - Develop and support a smart and green economy
  - Harness the County's resources and economic potential

# STRATEGIC QUESTIONS

- **What**      Priority Action for the Community Plan
- **How**      Overcoming barriers
- **Who**      Responsibility for delivery
- **When**      Timescale for delivery

# CONSIDERATIONS

- Can proposals be delivered within the Community Plan and Economic Plan process?
- Is there a dependence on external funding?
- Are proposals consistent with national and local policy?
- Wicklow County Development Plan 2016-2022 is under review in a separate process

# WHAT TO CONSIDER?

- **What is the issue** and why is it important for County Wicklow?
- Is it within the **scope** of the LECP?
- Is it a **problem** now or likely to be one in the future?
- Where do we want to be in terms of this issue in **5-10 years time**?
- What does the **evidence** show about the impact of the problem in the County?
- What are the **lessons** that have been learned to date about addressing this issue?
- Are there **other organisations/agencies** that should be involved – if so who are they?

# SUMMARY OF FINDINGS

→ **What**      Priority Action for the Community Plan

→ **How**      Overcoming barriers

→ **Who**      Responsibility for delivery

→ **When**      Timescale for delivery

→ This will inform the making of the Economic Plan

→ Prepared in draft July –September 2015

THANK YOU FOR ATTENDING

THIS CONSULTATION WORKSHOP ON  
*WICKLOW LOCAL ECONOMIC AND  
COMMUNITY PLAN*

